

FactoryLink[®]



One product,



many applications.

Why use Tecnomatix FactoryLink

Technical Leadership

Tecnomatix Technologies is recognized as a leading technology visionary and innovator. During the last 20 years, Tecnomatix led the transformation of the industrial software industry.

Industrial Know-How

Our team has accumulated thousands of man-years of experience and a massive amount of industrial knowledge. We view our software as a mechanism to package this knowledge and deliver it to our customers in the form of a highly functional, high-performance solution.

Investment Protection

Tecnomatix has always protected customers' application investments by maintaining compatibility and seamless upgrade paths. Unlike other companies who force customers to largely rework projects when new technologies emerge, FactoryLink's superior architecture has transcended numerous underlying technology shifts.

Global Presence

With more than 80,000 installations of FactoryLink around the world, customers representing nearly every industry on earth trust Tecnomatix solutions to monitor and control their most important processes.

World-Class Services

Tecnomatix combines superior technology with a complete range of consulting, training, and support services to ensure you complete your project on time and within budget.

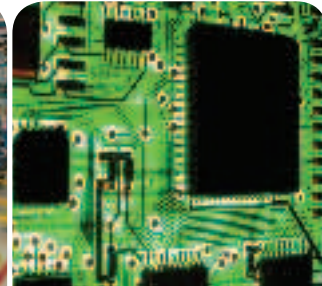
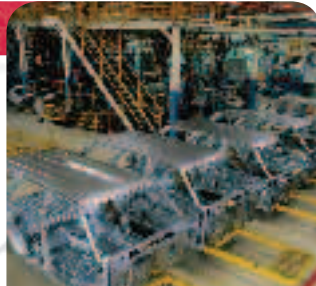


One Product, Many Applications

FactoryLink provides comprehensive, state-of-the-art tools that empower users to configure applications tailored to exactly satisfy their requirements. Spanning the spectrum of real-time human machine interfaces (HMI), supervisory control and data acquisition (SCADA), and industrial information management applications, the versatility of the product is virtually unlimited. This adaptability is demonstrated by the more than 80,000 systems installed worldwide in such diverse industries as:

Discrete

- Automotive
- Electronics
- Semiconductor
- Packaging



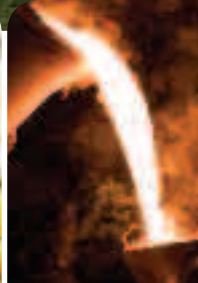
Process

- Utilities
- Oil and Gas
- Chemicals



Hybrid

- Food and Beverage
- Pharmaceutical
- Metals
- Mining
- Printing



Infrastructure

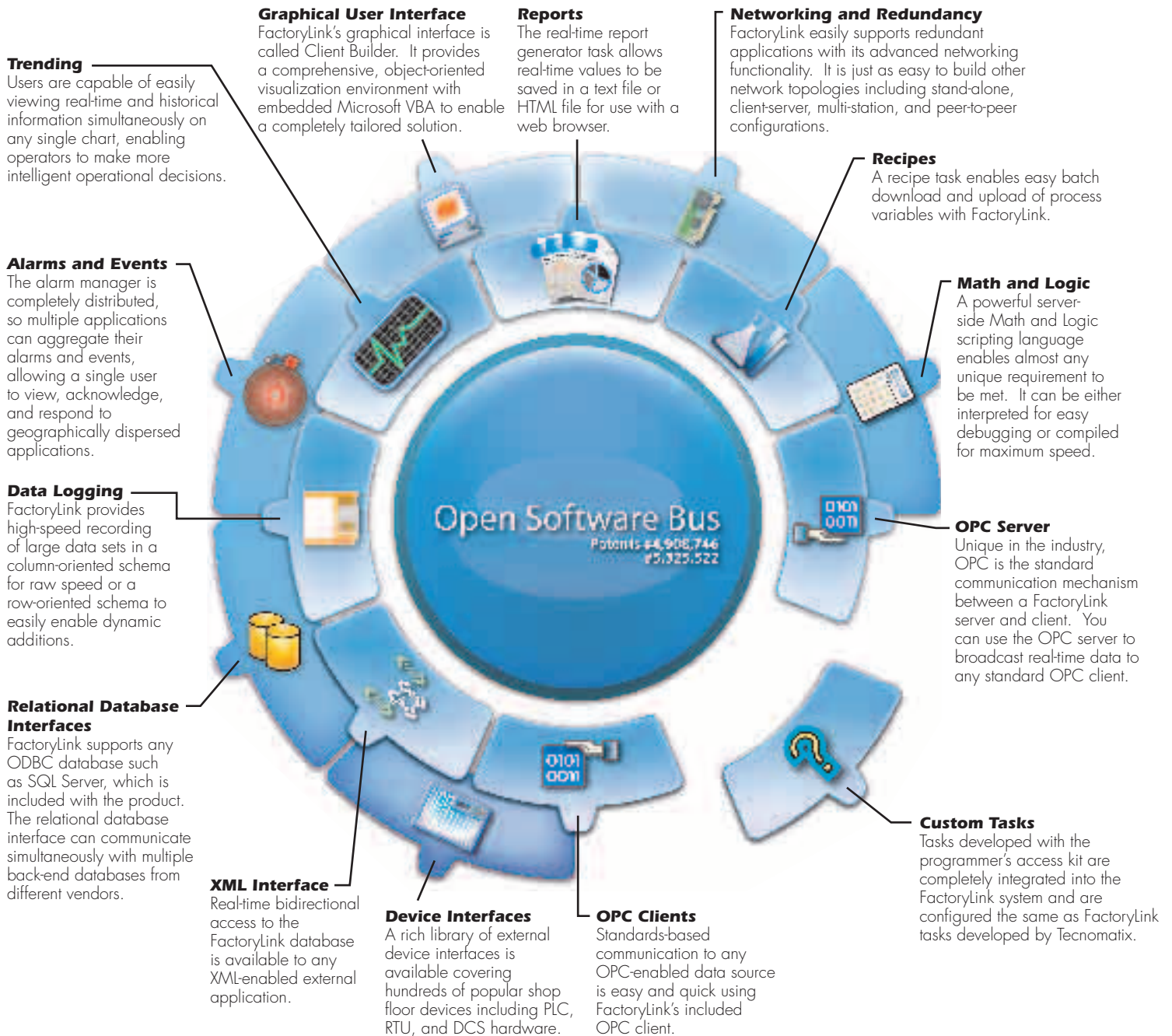
- Building Automation
- Transportation



A tradition of innovation:

Year	Description
1978	Ignited the market by creating the first user-configurable HMI for the emerging PLC market
1986	First to deliver an HMI/SCADA product with open software architecture and real-time database
1990	First to establish standard relational databases as a single repository for all historical information
1994	First to ship a multi-user, n-tier application with symmetric multiprocessing support on Windows NT
1996	First to market with a web-based client allowing secure full-control and view-only functionality over the Internet
2000	First to introduce user-configurable application objects that allow modeling of all aspects of real-world devices
2002	First to provide a bidirectional XML interface to send and receive real-time values

Comprehensive Functionality



What's new in FactoryLink

- Comprehensive new functionality allows users to rapidly build applications compliant with the requirements of the US FDA 21 CFR Part 11 regulations and other GAMP (Good Automated Manufacturing Practices) initiatives.
- Out-of-the-box reporting enables users to instantly understand trends and tendencies in the operational knowledge they collect from managed processes.
- Automatic e-mailing of alarms and events allows users to quickly acknowledge and respond to upset conditions.
- New waveform and sequencing task helps quickly commission projects by emulating real-world I/O and devices.
- One-click client enables rapid deployment of client nodes on a LAN or VPN using a lightweight install requiring no user intervention.
- Rapid setup of redundant applications is made easier by several ease-of-use and license server enhancements.
- 10x performance improvement in the automatic generation of systems using FactoryLink's groundbreaking application object technology.

Powerful and Easy Configuration Tools

Configuration Explorer

Configuration Explorer is an intuitive environment that provides access to configure and run FactoryLink server applications over a network. A single user can access multiple FactoryLink servers, or multiple users can concurrently configure a single FactoryLink server. This distributed access results in a significant increase in application development productivity. Configuration Explorer provides a familiar Microsoft Explorer-like hierarchical view for navigating through FactoryLink applications.

Configuration Explorer promotes the concept of object-based configuration using application objects that model real world objects and include the various SCADA functionalities available within the system, such as alarming, data logging, and communications. A FactoryLink application can be built simply by dragging the desired objects into the application.

Application object technology unleashes unprecedented levels of productivity:

- Repetition in configuration is completely eliminated.
- Configuration errors are reduced.
- Application development times are slashed.
- Application maintenance is far easier.



Configuring applications is easy with drag-and-drop application objects, which can import data directly from Excel.

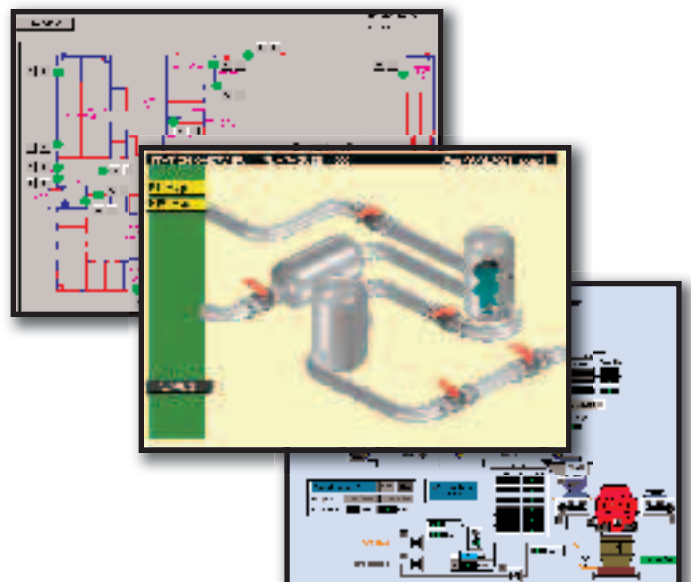
Client Builder

Client Builder is a tool for building dynamic process visualization graphics. Very easy to use and intuitive, Client Builder provides unique functionality and productivity for building user interfaces tailored to the requirements of HMI and SCADA applications. Numerous advanced functions are standard in Client Builder, such as complete pan and zoom, multiple monitor support, layering, decluttering on zoom, data caching, and many others.

Client Builder is an ActiveX container, so any compatible third-party ActiveX control can be inserted into a Client Builder mimic. ActiveX controls are included for viewing alarms, trend charts, and database queries within FactoryLink. ActiveX document support enables real-time graphics to be combined with other content in a web browser.

Client Builder incorporates Microsoft Visual Basic for Applications so users can easily script and extend functionality using an open and standard environment. Any graphical object such as drawings, animations, symbols, mimics, and user profiles, are completely customizable by altering their properties in VBA scripts.

A strong object orientation is achieved by using graphical symbols that are class-based and object-oriented. Each time a symbol is modified, all instances inherit changes to their visualization and real-time links. Symbols and libraries are included with the product, or may be user-defined and shared with other projects.



Visualization of the real-time process keeps operators informed and in control.

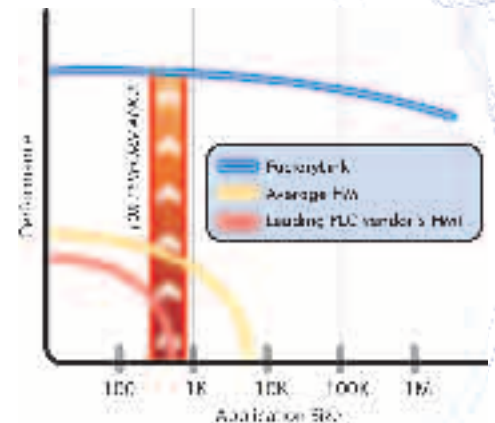
An Advanced High-Performance Architecture

Real-time computing systems make unique demands on processors, file systems, relational databases, networking, and other basic computing subsystems. To meet the demands of overall system performance, speed, and responsiveness requires a well-crafted architecture.

At the core of FactoryLink is the Open Software Bus, a design so significant that the U.S. Patent office awarded patents for this technology. This architecture empowers Tecnomatix and our customers to take advantage of the latest technologies and standards, and most importantly delivers speed and performance superior to that of all other designs.

High-Speed Data Transfers

Transferring large amounts of information at the highest possible speed is essential for real-time automation systems. The Open Software Bus provides data transfers optimized for each individual software module. In a single operation, each module accesses only the data it needs regardless of the number of modules supplying the data.



FactoryLink's unique architecture outperforms the competition - in some cases by more than 10 times.

Event-Driven and Exception-Based Processing

Tecnomatix provides the highest possible overall system performance, speed, and responsiveness, by combining exception-based and event-driven processing techniques. Event-driven applications are processed only when actions are taken or new data is available, while exception-based systems process only the exceptions or changes to the data rather than every single event.

While others may apply one of these techniques to some areas of their software, only FactoryLink applies event and exception processing to all modules.



A unique combination of event-driven and exception-based processing techniques maximizes overall system performance.

The FactoryLink Advantage

Lower infrastructure costs – FactoryLink's superior high-performance architecture does not require as many computing resources as competitive products to achieve an equivalent level of performance. This reduces your overall hardware, software, and support costs.

Grow as you go – The exception-based processing architecture allows you to scale applications from the very small to the very large with minimal additional hardware costs.

Compliance assurance – Detailed audit logs, multiple security levels, and other advanced features facilitate building applications that are compliant with industry standards and government regulations (21 CFR Part 11, TREAD Act, etc.).

Harness the power of the network – The multi-tier architecture design means that it can be deployed in a wide-array of flexible architectures including single station, multi-station client/server, and peer-to-peer.

High availability – Best-in-class application redundancy and online configuration capabilities are easy to set up to ensure that your system is continuously up and running 24x7.

Comprehensively open – Open, published interfaces based on industry standards mean your application can be seamlessly integrated into virtually any environment.

Everything you need – Only FactoryLink includes Microsoft SQL Server and true Microsoft VBA in the box, ensuring that you can assemble a complete solution without incurring additional and costly third-party license expenses.

FactoryLink software provides the process knowledge and control needed to perfect the products companies make and the processes they manage.



Tecnomatix

About Tecnomatix

Tecnomatix Technologies Ltd. provides the world's leading Manufacturing Process Management (MPM) solutions for the automotive, electronics, aerospace and other manufacturing and processing industries. Tecnomatix eMPower solutions for MPM enable the design, simulation, and execution of production processes, and provide real-time control and visibility throughout shop floor operations. More than 5,000 companies worldwide are using eMPower solutions to reduce operating costs, accelerate product introductions, and shorten time-to-volume — while maintaining high levels of product and process quality. With offices in over 20 countries, Tecnomatix supports such global leaders as BMW, Boeing, Comau, Ford, GM, Mazda, Philips, Schneider Electric, and Volkswagen. For more information, visit www.tecnomatix.com.

Tecnomatix offers shop floor software and services that enable organizations to decrease costs, improve agility and capture operational knowledge. With over 80,000 installations of its eMPower, Xfactory and FactoryLink products, Tecnomatix is a clear leader in all areas of real-time process monitoring and control, production management, and execution.

About Xfactory

Xfactory® is an open platform combined with software applications and development tools that manage the day-to-day plant operations and the plant's integration to the extended enterprise and its supply chain. Xfactory provides on-demand, real-time and historical information about production processes, defect tracking, product genealogy, production reports, and key performance indicators. Based on a flexible object-modeling framework, Xfactory is ideal for customers seeking the benefits of a tailored production management solution with the lowest cost and shortest implementation time.

Tecnomatix Technologies, Inc.

2435 N. Central Expressway
Suite 1100
Richardson, TX 75080
800.685.0522
972.680.9700

Worldwide Shop Floor Division Offices

Belgium	+32.2.411.0113
Denmark	+45.47.10.86.33
France	+33 (0) 1.34.58.24.00
Italy	+39.02.7533955
Switzerland	+41.52.685.01.22
UK	+44.121.745.0300

www.tecnomatix.com